



tantulus xhp indoor



tunableWhite




TECHNICAL DATASHEET

tantulus xhp indoor

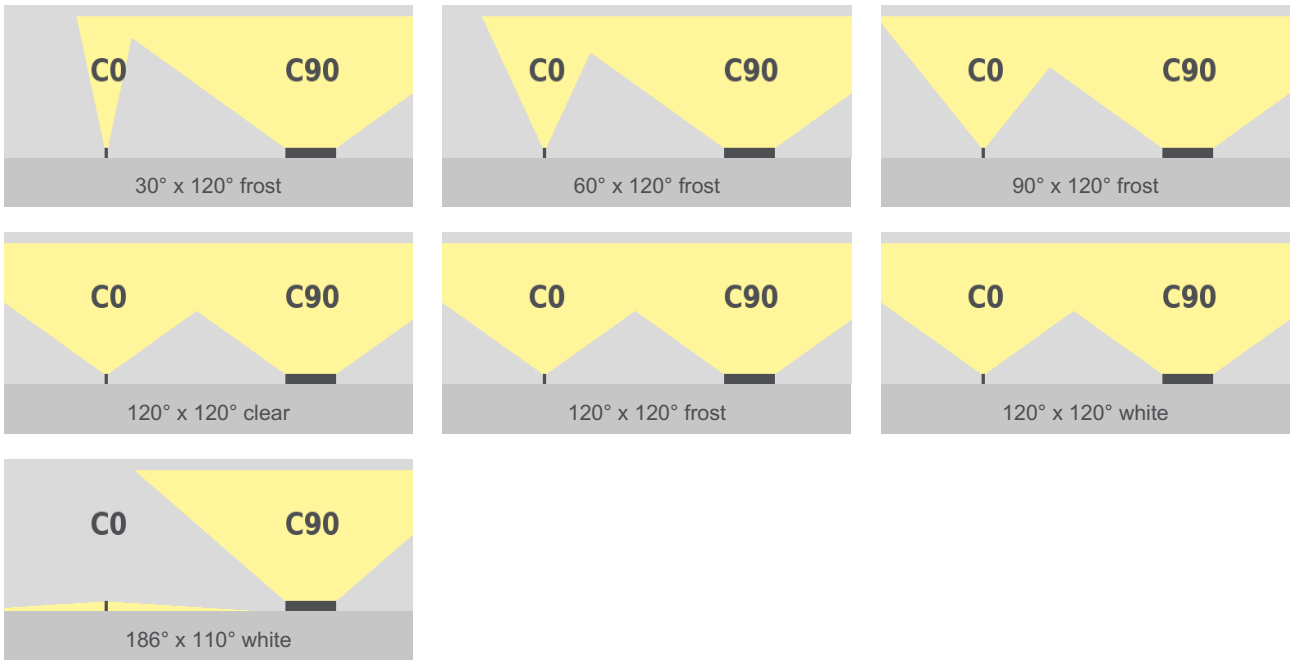
tunableWhite

Technical Data

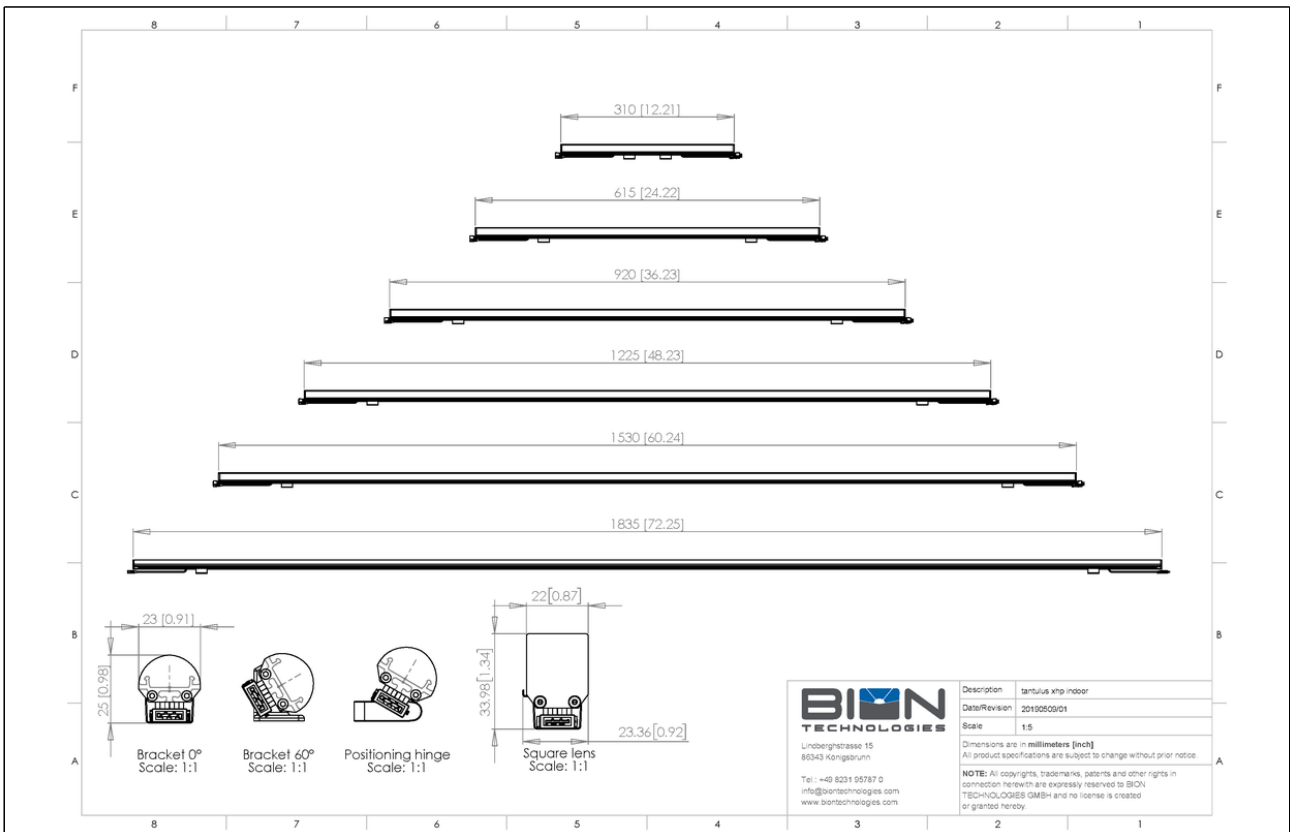
Dimensions	23 mm x 19 mm [W x H] 0.91 in x 0.75 in [W x H]
Standard Unit Lengths	310 mm, 615 mm, 920 mm, 1225 mm, 1530 mm, 1835 mm 12.21 in, 24.22 in, 36.23 in, 48.23 in, 60.24 in, 72.25 in
Fixture Typ	 tunableWhite
Color Temperatures tunableWhite	2700 K - 5700 K * Project-specific color temperature ranges for tunableWhite available.
Beam Angles	30° x 120°, 60° x 120°, 90° x 120°, 120°, 120° 120°, 186° x 110°
Luminous Flux	310 mm (12.21 in): 820 lm 615 mm (24.22 in): 1640 lm 920 mm (36.23 in): 2460 lm 1225 mm (48.23 in): 3280 lm 1530 mm (60.24 in): 4100 lm 1835 mm (72.25 in): 4920 lm
Light Source	310 mm (12.21 in): 20 LEDs 615 mm (24.22 in): 40 LEDs 920 mm (36.23 in): 60 LEDs 1225 mm (48.23 in): 80 LEDs 1530 mm (60.24 in): 100 LEDs 1835 mm (72.25 in): 120 LEDs
R9	20
LED-Binning	
MacAdam Ellipses Binning	2

Input Voltage	Power supply: external 36 VDC
Power Consumption	310 mm (12.21 in): Max. 6.5 W 615 mm (24.22 in): Max. 13 W 920 mm (36.23 in): Max. 19.5 W 1225 mm (48.23 in): Max. 26 W 1530 mm (60.24 in): Max. 32.5 W 1835 mm (72.25 in): Max. 39 W
Protection Class	II
Storage Temperatur	-20 °C / +40 °C -4 °F / +104 °F
Operating Temperature	-20 °C / +40 °C -4 °F / +104 °F
Start-up Temperature	-20 °C / +40 °C -4 °F / +104 °F
Lumen Maintenance [L70]	65'000 h @ 25 °C (77 °F) 40'000 h @ 50 °C (122 °F)
LED-Class	Class 2 LED Product
Housing	Aluminium
Housing Color(s)	 Aluminium anodized (Standard)
Lens	Material: PMMA Translucency clear 90% frost 87% white 70%
Weight	325 mm (12.80 in): 0,11 kg (0.24 lbs) 630 mm (24.80 in): 0,22 kg (0.49 lbs) 953 mm (37.52 in): 0,33 kg (0.73 lbs) 1240 mm (48.82 in): 0,44 kg (0.97 lbs) 1545 mm (60.83 in): 0,55 kg (1.21 lbs) 1850 mm (72.83 in): 0,66 kg (1.46 lbs)
Ingress Protection	IP20
Environment	 indoor
Certification	

Beam Angles



Engineering Drawing



Project	Fixture#	Date
		Firm

Ordering Information

Choose the option that suits your needs and write its corresponding code on the appropriate line to form the product code.

TAN-IN-XHP- TW2757 - _____ - _____ - Y01

TYP - LUMINOUS COLOR FIXTURE LENGTH BEAM ANGLE MOUNTING OPTION

TYP - LUMINOUS COLOR	
TW2757	tunableWhite - 2700 K - 5700 K

FIXTURE LENGTH	
310	310 mm / 12.2 in
615	615 mm / 24.21 in
920	920 mm / 36.22 in
1225	1225 mm / 48.23 in
1530	1530 mm / 60.24 in
1835	1835 mm / 72.24 in

MOUNTING OPTION	
K0	Bracket Set 0°
K15	Bracket Set 15°
K30	Bracket Set 30°
K45	Bracket Set 45°
K60	Bracket Set 60°
KADJ	Positioning Hinge
Fixed Angle: Bracket count: 2 <= 1225 mm (48.23 in) > 3 HKadj: Bracket count: 2 for all lengths	

BEAM ANGLE	
30X120(F)	30° x 120° frost
60X120(F)	60° x 120° frost
90X120(F)	90° x 120° frost
120X120(C)	120° x 120° clear
120X120(F)	120° x 120° frost
120X120(W)	120° x 120° white
SQR(W)	186° x 110° white

* Project-specific options are available - Please contact our Sales Representative for further information.



Lindberghstrasse 15
86343 Koenigsbrunn
Tel: +49 (0)8231/95787-0
Fax: +49 (0)8231/95787-29
www.biontechnologies.com
info@biontechnologies.com

YouTube: <http://www.youtube.com/user/BIONTECHNOLOGIES>

© 2023, BION TECHNOLOGIS GMBH
All rights reserved / Subject to change / Specifications may change without notice