



tantulus xhp indoor



pureWhite




TECHNICAL DATASHEET

tantulus xhp indoor

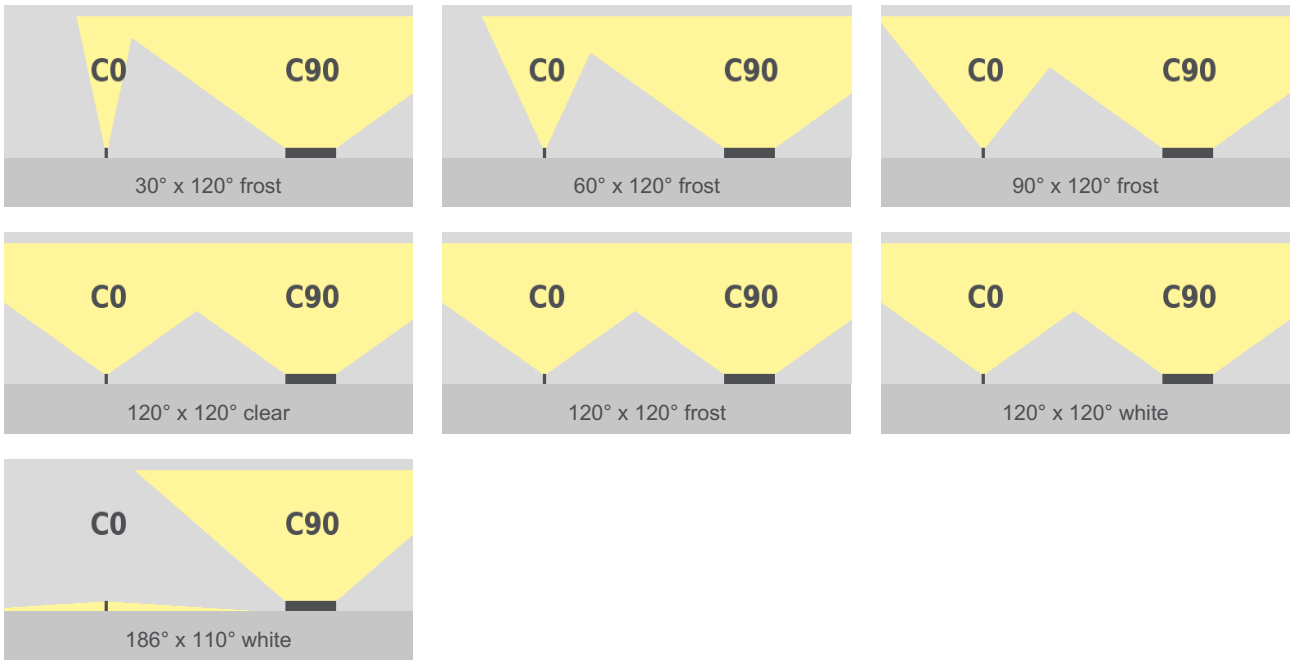
pureWhite

Technical Data

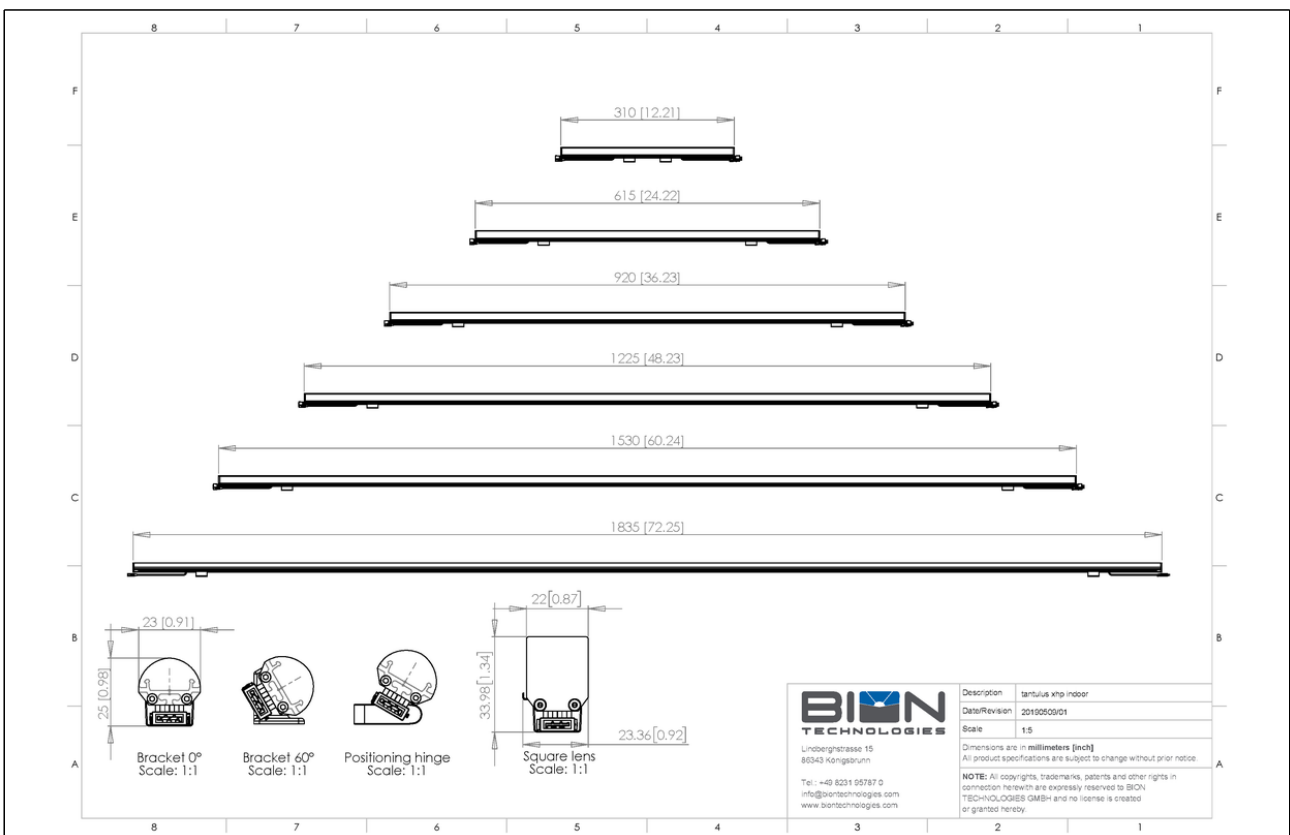
| | |
|------------------------------|---------------------------------------------------------------------------------------------------------------------------------------------------------------------------------------|
| Dimensions | 23 mm x 19 mm [W x H] 0.91 in x 0.75 in [W x H] |
| Standard Unit Lengths | 310 mm, 615 mm, 920 mm, 1225 mm, 1530 mm, 1835 mm 12.21 in, 24.22 in, 36.23 in, 48.23 in, 60.24 in, 72.25 in |
| Fixture Typ |  pureWhite |
| Color Temperatures pureWhite | 2000 K, 2200 K, 2500 K, 2700 K, 3000 K, 3500 K, 4000 K, 4500 K, 6500 K * Project-specific color temperature for pureWhite available. |
| Beam Angles | 30° x 120°, 60° x 120°, 90° x 120°, 120°, 120° 120°, 186° x 110° |
| Luminous Flux | 310 mm (12.21 in): 820 lm 615 mm (24.22 in): 1640 lm 920 mm (36.23 in): 2460 lm 1225 mm (48.23 in): 3280 lm 1530 mm (60.24 in): 4100 lm 1835 mm (72.25 in): 4920 lm |
| Light Source | 310 mm (12.21 in): 20 LEDs 615 mm (24.22 in): 40 LEDs 920 mm (36.23 in): 60 LEDs 1225 mm (48.23 in): 80 LEDs 1530 mm (60.24 in): 100 LEDs 1835 mm (72.25 in): 120 LEDs |
| Color Rendering Index | R _a >= 80 |
| R9 | 20 |
| LED-Binning |  |
| MacAdam Ellipses Binning | 2 |
| Dimming | external |

| | |
|-------------------------|-------------------------------------------------------------------------------------------------------------------------------------------------------------------------------------------------------------------------------------------------------|
| Input Voltage | Power supply: external 36 VDC |
| Power Consumption | 310 mm (12.21 in): Max. 6.5 W 615 mm (24.22 in): Max. 13 W 920 mm (36.23 in): Max. 19.5 W 1225 mm (48.23 in): Max. 26 W 1530 mm (60.24 in): Max. 32.5 W 1835 mm (72.25 in): Max. 39 W |
| Protection Class | II |
| Storage Temperatur | -20 °C / +40 °C -4 °F / +104 °F |
| Operating Temperature | -20 °C / +40 °C -4 °F / +104 °F |
| Start-up Temperature | -20 °C / +40 °C -4 °F / +104 °F |
| Lumen Maintenance [L70] | 65'000 h @ 25 °C (77 °F) 40'000 h @ 50 °C (122 °F) |
| LED-Class | Class 2 LED Product |
| Housing | Aluminium |
| Housing Color(s) |  Aluminium anodized (Standard) |
| Lens | Material: PMMA Translucency clear 90% frost 87% white 70% |
| Weight | 325 mm (12.80 in): 0,11 kg (0.24 lbs) 630 mm (24.80 in): 0,22 kg (0.49 lbs) 953 mm (37.52 in): 0,33 kg (0.73 lbs) 1240 mm (48.82 in): 0,44 kg (0.97 lbs) 1545 mm (60.83 in): 0,55 kg (1.21 lbs) 1850 mm (72.83 in): 0,66 kg (1.46 lbs) |
| Ingress Protection | IP20 |
| Environment |  indoor |
| Certification |  |

Beam Angles



Engineering Drawing



| | | |
|---------|----------|------|
| Project | Fixture# | Date |
| | | Firm |

Ordering Information

Choose the option that suits your needs and write its corresponding code on the appropriate line to form the product code.

TAN-IN-XHP- _____ - _____ - _____ - Y01

TYP - LUMINOUS
COLOR

FIXTURE LENGTH

BEAM ANGLE

MOUNTING
OPTION

| TYP - LUMINOUS COLOR | |
|----------------------|--------------------|
| PW20 | pureWhite - 2000 K |
| PW22 | pureWhite - 2200 K |
| PW25 | pureWhite - 2500 K |
| PW27 | pureWhite - 2700 K |
| PW30 | pureWhite - 3000 K |
| PW35 | pureWhite - 3500 K |
| PW40 | pureWhite - 4000 K |
| PW45 | pureWhite - 4500 K |
| PW65 | pureWhite - 6500 K |

| BEAM ANGLE | |
|------------|-------------------|
| 30X120(F) | 30° x 120° frost |
| 60X120(F) | 60° x 120° frost |
| 90X120(F) | 90° x 120° frost |
| 120X120(C) | 120° x 120° clear |
| 120X120(F) | 120° x 120° frost |
| 120X120(W) | 120° x 120° white |
| SQR(W) | 186° x 110° white |

| MOUNTING OPTION | |
|-------------------------------------------------------------------------------------------------------|-------------------|
| K0 | Bracket Set 0° |
| K15 | Bracket Set 15° |
| K30 | Bracket Set 30° |
| K45 | Bracket Set 45° |
| K60 | Bracket Set 60° |
| KADJ | Positioning Hinge |
| Fixed Angle: Bracket count: 2 <= 1225 mm (48.23 in) > 3 HKadj: Bracket count: 2 for all lengths | |

| FIXTURE LENGTH | |
|----------------|--------------------|
| 310 | 310 mm / 12.2 in |
| 615 | 615 mm / 24.21 in |
| 920 | 920 mm / 36.22 in |
| 1225 | 1225 mm / 48.23 in |
| 1530 | 1530 mm / 60.24 in |
| 1835 | 1835 mm / 72.24 in |

* Project-specific options are available - Please contact our Sales Representative for further information.



Lindberghstrasse 15
86343 Koenigsbrunn
Tel: +49 (0)8231/95787-0
Fax: +49 (0)8231/95787-29
www.biontechnologies.com
info@biontechnologies.com

YouTube: <http://www.youtube.com/user/BIONTECHNOLOGIES>

© 2023, BION TECHNOLOGIS GMBH
All rights reserved / Subject to change / Specifications may change without notice