



linea m hp indoor

tunableWhite

TECHNICAL DATASHEET

linea m hp indoor

tunableWhite

Technical Data

Dimensions 75 mm x 71 mm [W x H]
2.95 in x 2.80 in [W x H]

Fixture Typ



tunableWhite

Beam Angles

8°, 10°, 23°, 43°, 52°
8° x 31°, 10° x 42°, 12° x 60°, 14° x 100°, 30° x 60°, 20° x 60° (Tilt in C0-plane:
10°), 20° x 60° (Tilt in C0-plane: -10°)

Luminous Flux

1314 lm

Light Source

12 LED(s)

Antiglare

optional:





- Hex louver (internal)
 - Linear louver (internal)
-

LED-Binning



MacAdam Ellipses Binning

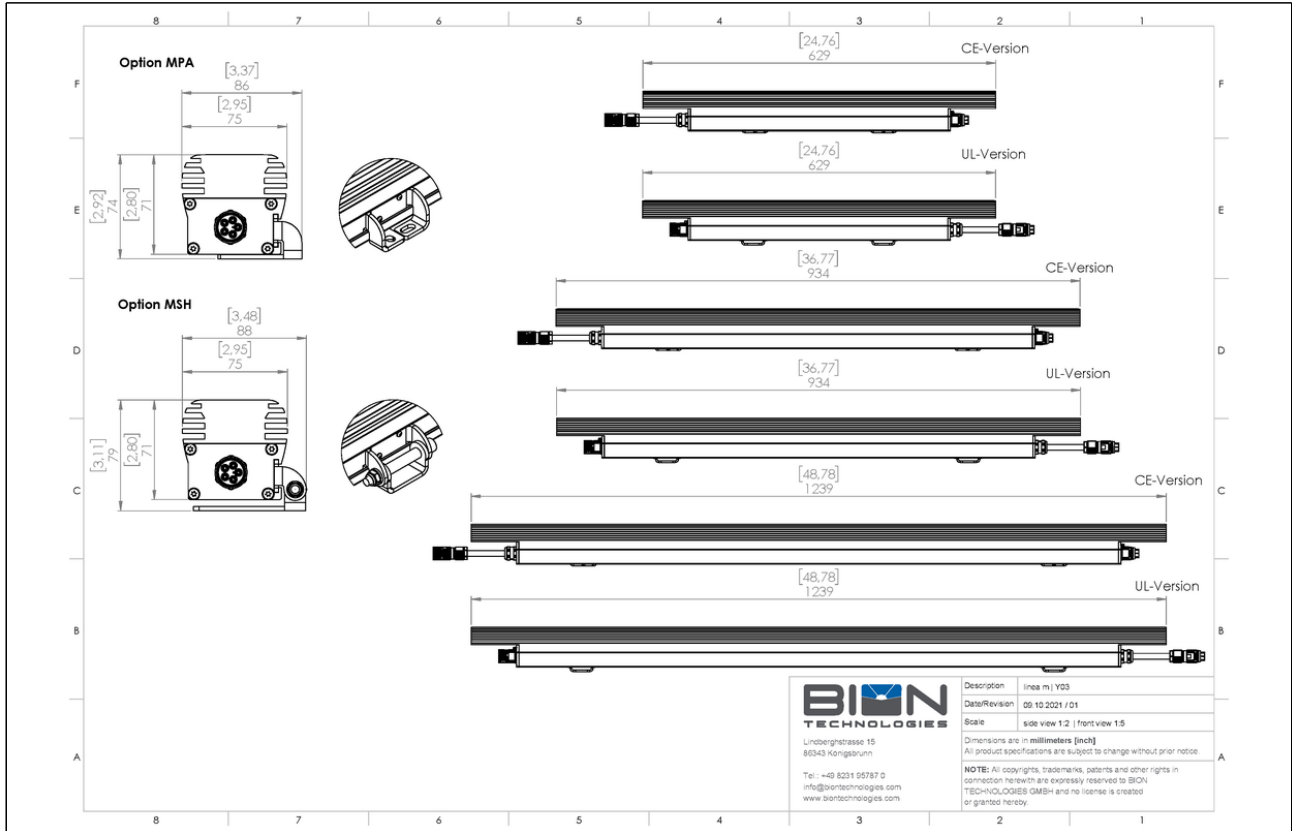
3

Input Voltage	Power supply: internal 100 - 240, 277 VAC (50 - 60 Hz) 127 - 431 VDC
Power Consumption	Max. 21 W
Power Factor Correction	> 0,97 -> 115 VAC @ max. Output > 0,95 -> 230 VAC @ max. Output > 0,92 -> 277 VAC @ max. Output
Protection Class	I
Inrush	55 A
Storage Temperatur	-40 °C / +80 °C -40 °F / +176 °F
Operating Temperature	-40 °C / +40 °C -40 °F / +104 °F
Start-up Temperature	-25 °C / +40 °C -13 °F / +104 °F
Lumen Maintenance [L70]	65'000 h @ 25 °C (77 °F) 40'000 h @ 40 °C (104 °F)
LED-Class	Class 2 LED-Product
Housing	Aluminium
Housing Color(s)	<div style="display: flex; justify-content: space-around; align-items: center;"> <div style="text-align: center;">  <p>Aluminium anodized (Standard)</p> </div> <div style="text-align: center;">  <p>Black anodized</p> </div> </div>
Lens	Tempered safety glass, extra white
Weight	311 mm / 12.25 in: 1,25 kg (2.76 lbs) 617 mm / 24.30 in: 2,5 kg (5.51 lbs) 922 mm / 36.30 in: 3,75 kg (8.27 lbs) 1228 mm / 48.35 in: 7 kg (15.43 lbs)
Ingress Protection	IP20
Environment	 indoor
Impact Protection	IK07
Certification	

Beam Angles



Engineering Drawing



Project	Fixture#	Date
		Firm

Ordering Information

Choose the option that suits your needs and write its corresponding code on the appropriate line to form the product code.

LIN-M-HP-IN- _____ - _____ - _____ - _____ - _____ - _____ - Y03

TYP - LUMINOUS
COLOR

DIMMING

BEAM ANGLE

HOUSING COLOR

LEADERCABLE
LENGTH

GLARE
PROTECTION

MOUNTING
OPTION

TYP - LUMINOUS COLOR

HOUSING COLOR	
---------------	--

AA Aluminium anodized (Standard)

BA Black anodized

DIMMING

BEAM ANGLE	
------------	--

8X8 8° x 8°

10X10 10° x 10°

23X23 23° x 23°

43X43 43° x 43°

52X52 52° x 52°

8X31 8° x 31°

10X42 10° x 42°

12X60 12° x 60°

14X100 14° x 100°

30X60 30° x 60°

20X60Y10R 20° x 60° (Tilt in C0-plane: 10°)

20X60Y10L 20° x 60° (Tilt in C0-plane: -10°)

LEADERCABLE LENGTH	
--------------------	--

ETE End to end - wiring

003 + 30 cm (ca. 1 ft)

006 + 60 cm (ca. 2 ft)

009 + 90 cm (ca. 3 ft)

012 + 1,2 m (ca. 4 ft)

GLARE PROTECTION	
------------------	--

OP No glare protection

HL Hex louver (internal)

LL0 Linear louver (internal)

MOUNTING OPTION	
-----------------	--

MPA Mounting Plate Basic

MSH Mounting Set Hinge

Sample Order Code: linea-m-hp-in-tw3060-dim-DMX-4/1228-8x8-AA-Y01

* Project-specific options are available - Please contact our Sales Representative for further information.



Lindberghstrasse 15
86343 Koenigsbrunn
Tel: +49 (0)8231/95787-0
Fax: +49 (0)8231/95787-29
www.biontechnologies.com
info@biontechnologies.com

YouTube: <http://www.youtube.com/user/BIONTECHNOLOGIES>

© 2021, BION TECHNOLOGIS GMBH
All rights reserved / Subject to change / Specifications may change without notice